

SHEET TITLE:  
**IRRIGATION PLAN**  
COMPLETE IRRIGATION LAYOUT  
(NOTES, LEGEND & DETAILS)

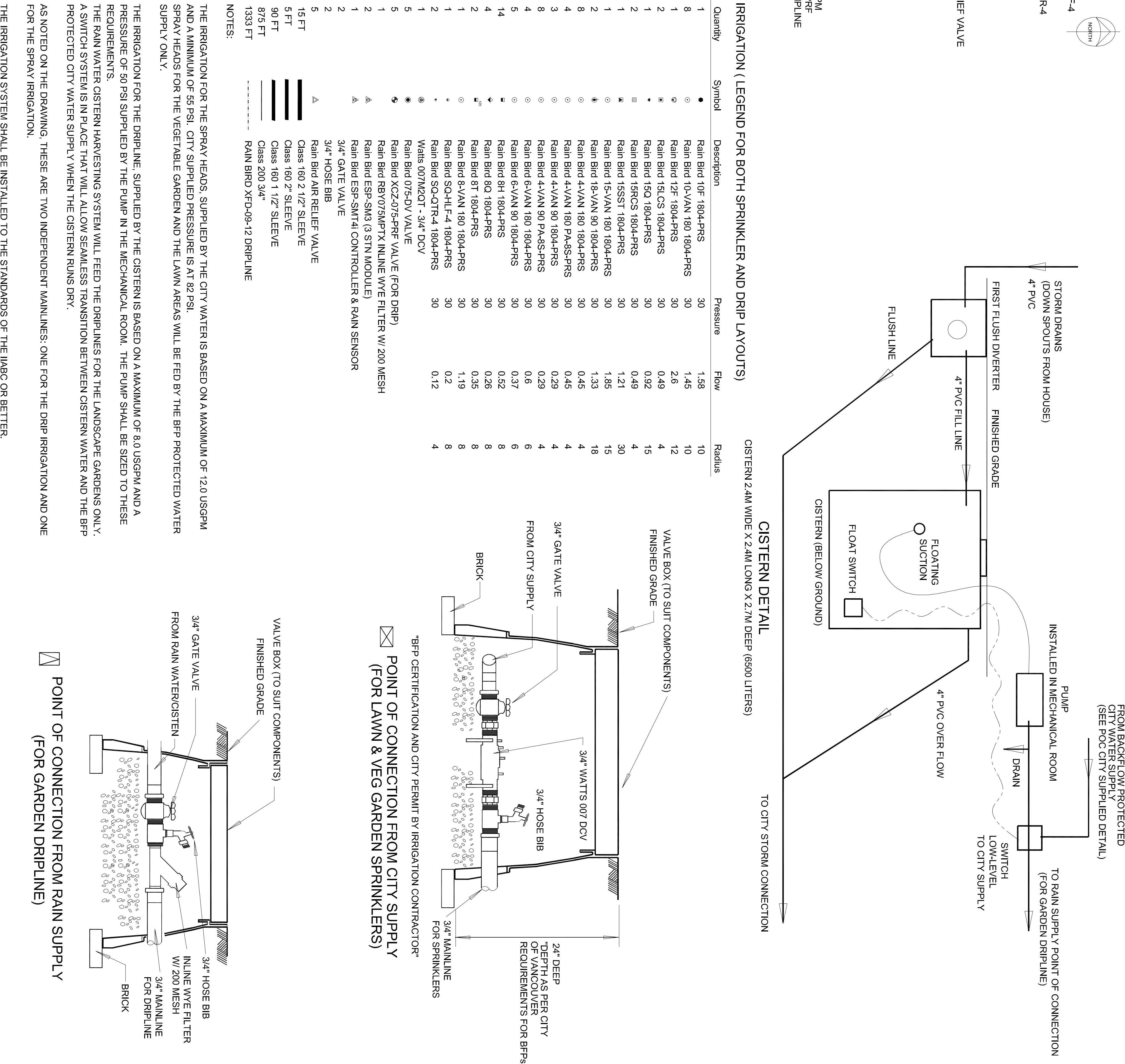
PROJECT:

REVISIONS:

DATE: **AUG 3, 11**  
JOB #: \_\_\_\_\_  
DRAWN BY: **CAL**  
CHECKED BY: \_\_\_\_\_

SCALE:  
1/8" = 1 FT

SHEET:  
1 OF 3



**IRRIGATION (LEGEND FOR BOTH SPRINKLER AND DRIP LAYOUTS)**

Quantity	Symbol	Description	Pressure	Flow	Radius
1	●	Rain Bird 10F 1804-PRS	30	1.58	10
8	○	Rain Bird 10-VAN 180 1804-PRS	30	1.45	10
1	○	Rain Bird 12F 1804-PRS	30	2.6	12
2	○	Rain Bird 15LCS 1804-PRS	30	0.49	4
1	○	Rain Bird 15Q 1804-PRS	30	0.92	15
2	○	Rain Bird 15RCS 1804-PRS	30	0.49	4
1	○	Rain Bird 15SST 1804-PRS	30	1.21	30
1	○	Rain Bird 15-VAN 180 1804-PRS	30	1.85	15
2	○	Rain Bird 18-VAN 90 1804-PRS	30	1.33	18
8	○	Rain Bird 4-VAN 180 1804-PRS	30	0.45	4
4	○	Rain Bird 4-VAN 180 PA-8S-PRS	30	0.45	4
3	○	Rain Bird 4-VAN 90 1804-PRS	30	0.29	4
4	○	Rain Bird 4-VAN 90 PA-8S-PRS	30	0.29	4
8	○	Rain Bird 6-VAN 180 1804-PRS	30	0.6	6
4	○	Rain Bird 6-VAN 90 1804-PRS	30	0.37	4
5	○	Rain Bird 8H 1804-PRS	30	0.52	8
4	○	Rain Bird 8Q 1804-PRS	30	0.26	8
2	○	Rain Bird 8T 1804-PRS	30	0.35	8
1	○	Rain Bird 8-VAN 180 1804-PRS	30	1.19	8
1	○	Rain Bird SQ-HLF-4 1804-PRS	30	0.2	8
2	○	Rain Bird SQ-QTR-4 1804-PRS	30	0.12	4
1	○	Watts 007M20T - 3/4" DCV			
1	○	Rain Bird 075-DV VALVE			
5	○	Rain Bird XCZ-075-PRF VALVE (FOR DRIP)			
2	○	Rain Bird RBY075MPTX INLINE WYE FILTER W/ 200 MESH			
1	○	Rain Bird ESP-SM3 (3 STN MODULE)			
1	○	Rain Bird ESP-SMT4I CONTROLLER & RAIN SENSOR			
2	○	3/4" GATE VALVE			
2	○	3/4" HOSE BIB			
5	○	Rain Bird AIR RELIEF VALVE			
15 FT	○	Class 160 2 1/2" SLEEVE			
5 FT	○	Class 160 2" SLEEVE			
90 FT	○	Class 160 1 1/2" SLEEVE			
875 FT	○	Class 200 3/4"			
1333 FT	○	RAIN BRD XFD-09-12 DRIP LINE			

**NOTES:**

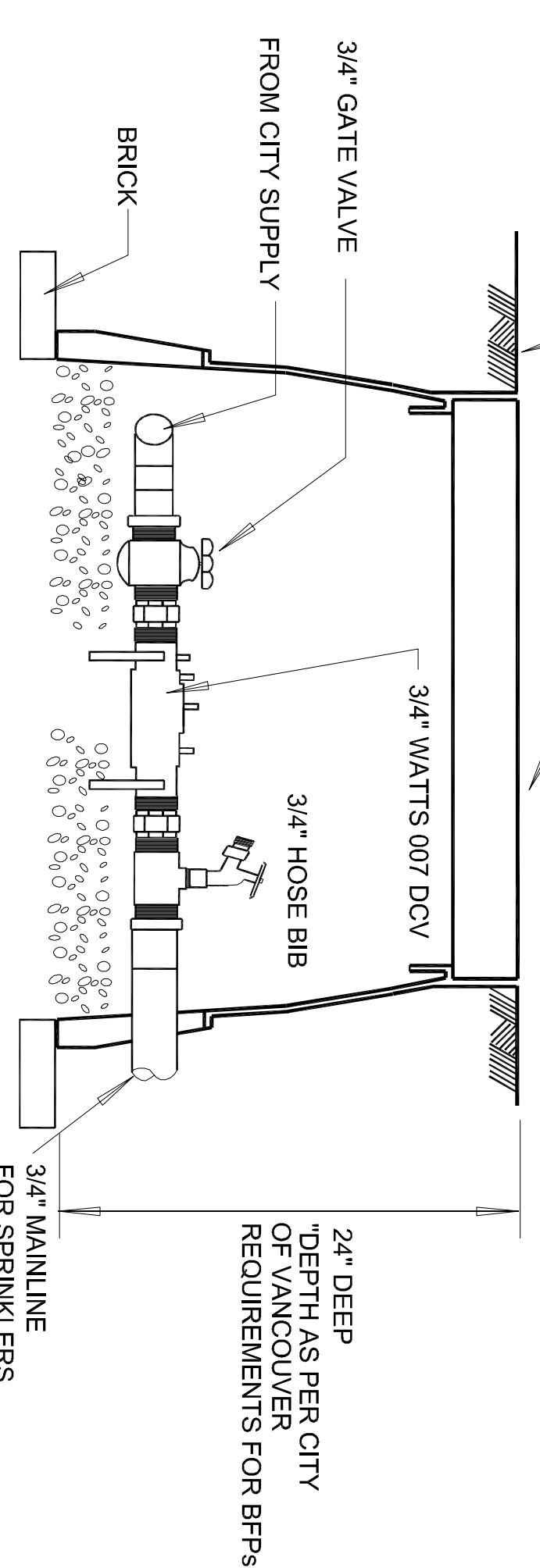
THE IRRIGATION FOR THE SPRAY HEADS, SUPPLIED BY THE CITY WATER IS BASED ON A MAXIMUM OF 12.0 USGPM AND A MINIMUM OF 55 PSI. CITY SUPPLIED PRESSURE IS AT 82 PSI.  
SPRAY HEADS FOR THE VEGETABLE GARDEN AND THE LAWN AREAS WILL BE FED BY THE BFP PROTECTED WATER SUPPLY ONLY.

THE IRRIGATION FOR THE DRIPLINE, SUPPLIED BY THE CISTERN IS BASED ON A MAXIMUM OF 8.0 USGPM AND A PRESSURE OF 50 PSI SUPPLIED BY THE PUMP IN THE MECHANICAL ROOM. THE PUMP SHALL BE SIZED TO THESE REQUIREMENTS.  
THE RAIN WATER CISTERN HARVESTING SYSTEM WILL FEED THE DRIP LINES FOR THE LANDSCAPE GARDENS ONLY. A SWITCH SYSTEM IS IN PLACE THAT WILL ALLOW SEAMLESS TRANSITION BETWEEN CISTERN WATER AND THE BFP PROTECTED CITY WATER SUPPLY WHEN THE CISTERN RUNS DRY.

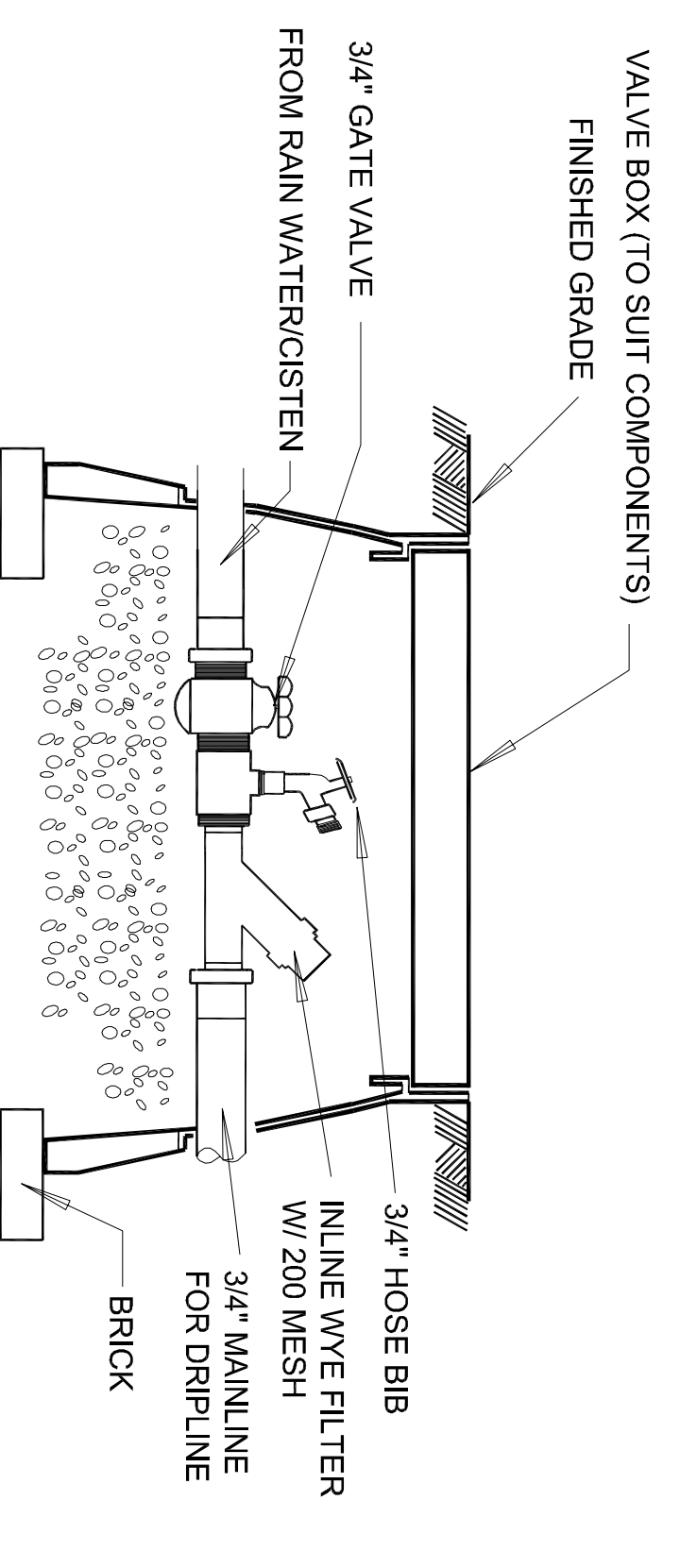
AS NOTED ON THE DRAWING, THESE ARE TWO INDEPENDENT MAINLINES: ONE FOR THE DRIP IRRIGATION AND ONE FOR THE SPRAY IRRIGATION.

THE IRRIGATION SYSTEM SHALL BE INSTALLED TO THE STANDARDS OF THE IABC OR BETTER.

THE CONTROLLER SHALL BE INSTALLED IN THE GARAGE. THE LOCATION OF THE RAIN SENSOR SHALL BE VERIFIED ON SITE.



**CISTERN DETAIL**  
CISTERN 2.4M WIDE X 2.4M LONG X 2.7M DEEP (6500 LITERS)



**POINT OF CONNECTION FROM RAIN SUPPLY (FOR GARDEN DRIPLINE)**

FOR DRIP SYSTEM LAYOUT SEE SHEET 2 OF 3  
FOR SPRINKLER SYSTEM LAYOUT SEE SHEET 3 OF 3